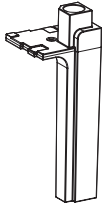
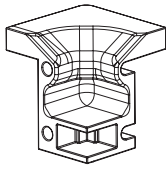


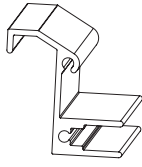
H2 Hybrid™ Pull Out Tray System B List of Parts



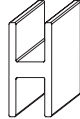
Pull Out Tray
Corner Cap



Pull Out Tray
Corner Joint



PTF (Aluminum)



UFD (Aluminum)



2RT Trackwork
(Plastic)



2UC "U" Channel
(Plastic)



#6 x 1" Thread
Forming Screw



#4 x 3/8" Flat
Head Screw
(Black)

H2 Hybrid™ Pull Out Tray System B Assembly Instructions

Taking Inventory

Make sure you have all of your packages. The Fed-Ex ground label on your packages will say how many packages come with your shipment. It is not unusual for packages to arrive separately, sometimes a few hours apart and sometimes a day or two apart.

Once you have established you have all your packages, take an inventory of all your parts. You should have all the parts listed on your packing list enclosed with your unit. If you ordered a cage, hood, stand, or pull out tray, each unit you ordered will have it's own packing list. If you think you are missing parts, look closely at the list of parts above and make sure you are clear what the part looks like. Some drawings of parts shown above are small sections of the actual part, the actual parts are often much longer. Also, make sure you thoroughly unpack all boxes. Often times similar parts are packaged in separate boxes. Small parts can also be easily lost in the packaging, so thoroughly look through all packaging. If you think you are still missing parts after thoroughly searching all boxes, email CustCagesContact@aol.com or call our customer service number (920) 886-1220 to determine if you need replacement parts. **Follow pull out tray instructions after completing step 3 for the assembly of your cage.** Some small parts are easy to lose and will make cage assembly impossible if lost, so keep them in a container in a safe place until needed.

Illustration P1

Step 1- Attaching Pull Out Tray Corner Caps to Bottom of Cage

1.1 Parts Used for this Step

- 4 Pull out tray caps per section of cage
- 4 #4 x 3/8" Flat head screws

1.2 Attach Pull Out Tray Corner Caps to Bottom of Cage

The pull out tray corner caps attach the same way the regular corner caps do to the bottom of the cage, see illustration P1. Insert the pull out tray corner cap into each corner of the bottom of the cage and fasten with a #4 x 3/8" flat head screw. This will require a #1 phillips head screw driver.

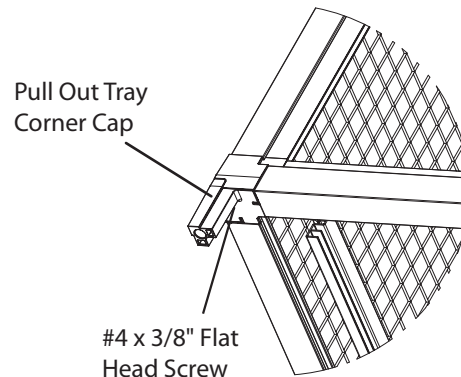


Illustration P2

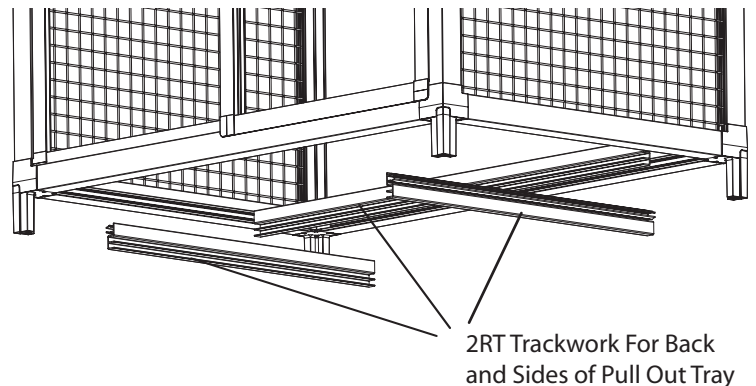
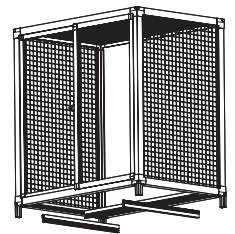
Step 2- Attaching Pull Out Track Work to Cage Bottom

2.1 Parts Used for this Step

- 1 piece of 2RT trackwork for the length of your cage and the back of your tray(s) per section of cage
- 2 pieces of 2RT trackwork for the depth of your cage and the sides of your tray per section of cage

2.2 Attaching Pull Out Track Work to Cage Bottom

For each section of your cage, snap in part 2RT trackwork into the back and side framework of the cage as shown in illustration P2. Once this is snapped in it is very difficult to remove, so make sure you are doing it correctly the first time. You may need to disassemble the bottom of the cage in order to remove the 2RT trackwork if it is not done properly. It is also helpful to use a rubber mallet to assist you in snapping the 2RT trackwork in place.



Step 3- Assembling Pull Out Tray

Each section of your cage will have one pull out tray. Follow pull out tray assembly instructions below from start to finish for each pull out tray.

Depending on your cage configuration, each pull out tray will have 1 or 2 panels. You can look on your packing list to see what type of configuration your cage has. Illustration P4 shows both configurations.

3.1 Parts Used for this Step

- 1 or 2 aluminum laminate pull out tray panels per section of cage
- 2UC "U" channel to frame your pull out tray panels
- Part UFD if necessary to connect multiple panels
- Pull out tray corner joints
- #6 x 1" thread forming screws

3.2 Framing Your Panels with 2UC "U" Channel

Frame each of your aluminum laminate panels with 2UC "U" channel as shown in illustration P3. See your packing list to find what length 2UC "U" channel corresponds with your aluminum laminate panels.

3.2 Assembling Your Pull Out Tray Frame

Screw your pull out tray corner joints to the ends of the longest PTF aluminum frame members with #6 x 1" thread forming screws as shown in illustration P4. Then, press fit these frame members onto the long edge of your aluminum laminate panels. Make sure you line up the pull out tray corner joints with the end of the aluminum laminate panels so the frame members are press fit center on the panel. Once the longer frame members are press fit onto the panels you can attach the shorter frame members to the pull out tray corner joints. **Be careful not to over tighten thread forming screws: do not use power tools when screwing in, this will greatly increase the chance of over tightening and stripping the aluminum.**

Step 4- Inserting Pull Out Tray Into Cage

4.1 Inserting Pull Out Tray into Cage

Once you have the pull out tray corner caps installed and the pull out tray assembled, you can slide the pull out tray into the bottom of your cage. If you ordered a pull out floor, the pull out floor should go on the top track and the pull out tray should go on the bottom track. If you did not order a pull out floor you can slide the pull out tray into the top track of the 2RT trackwork.

Illustration P3

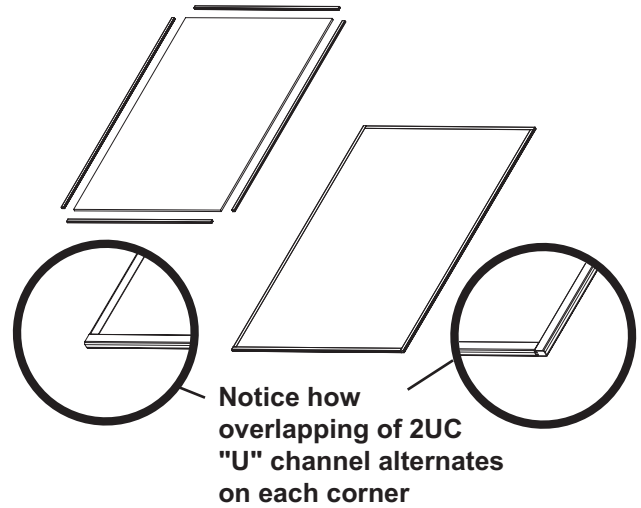


Illustration P4

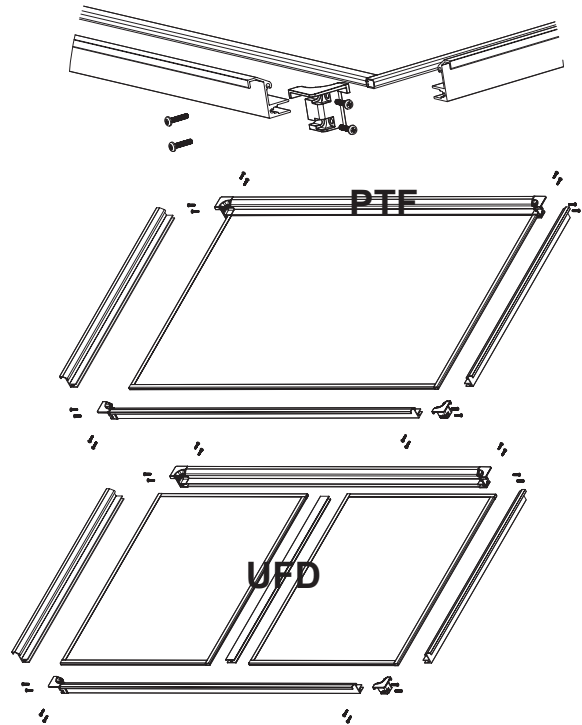
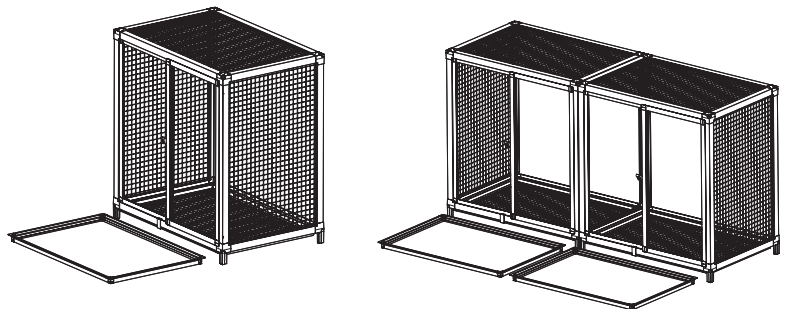


Illustration P5



Pull Out Tray
on 1 Section
Cage

Pull Out Trays
on 2 Section
Cage